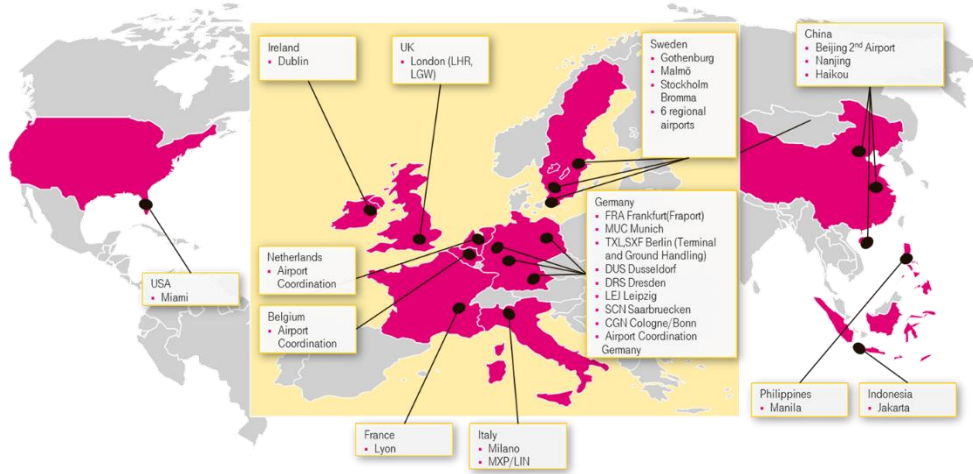


Our customers.



A reliable partner with a long-proven track record.

T-Systems is more than just a service provider.

We are your partner for all of your ICT-related needs.

We combine extensive experience, industry-specific expertise and cutting-edge technology to optimize your processes, helping you reap tangible benefits in all areas of your business.

We currently serve a wide range of airlines, airports and ground handling companies around the globe – from airport resource and flight data management, slot coordination to ground handling.

What can we do for you?

EXPERT CONTACT

T-Systems International GmbH
 Michael Brost
 Senior Project Manager
 Am Gut Wolf 9a
 52070 Aachen

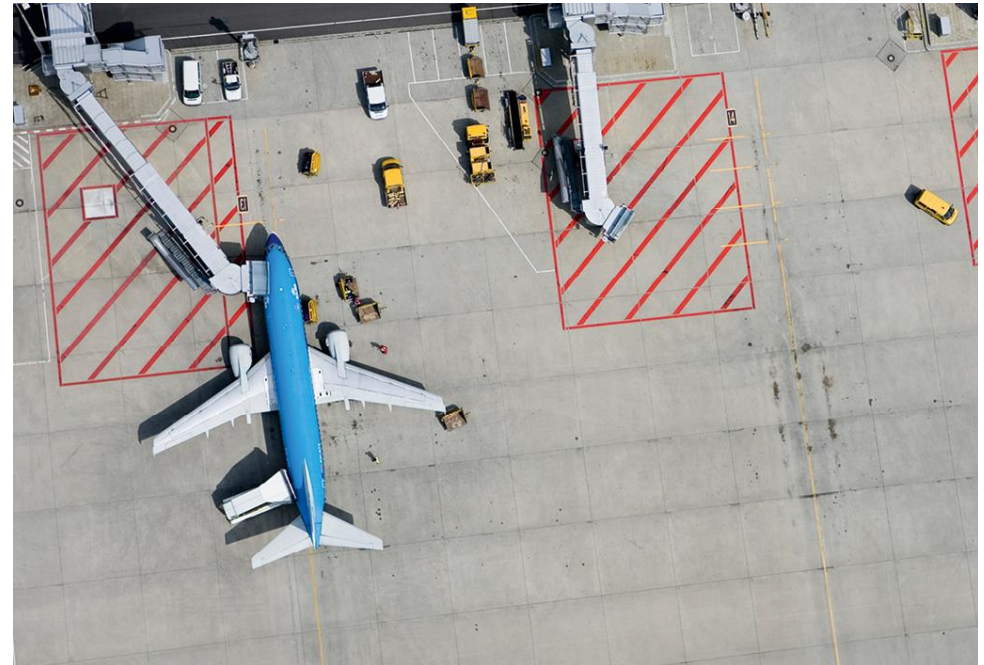
Email: michael.brost@t-systems.com
 Telephone: +49 241 919 7189
 Fax: +49 241 919 7149
 Mobile: +49 151 125 736 52
 Internet: www.t-systems.com

PUBLISHED BY

T-Systems International GmbH
 Hahnstr. 43d
 60528 Frankfurt am Main, Germany

RESPONSIBLE FOR CONTENT:
 Systems Integration
 Sales Aviation

RESOURCE MANAGEMENT SYSTEM BY T-SYSTEMS



Aviation is changing fast. Today's successful companies need to optimize processes and improve service quality while minimizing effort and expense. Streamlining the management of IT infrastructure and business processes can rapidly enhance efficiency. That is where sophisticated ICT solutions come in.

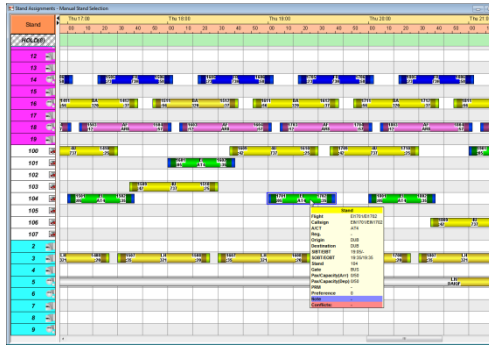
AVIATION SOLUTION PORTFOLIO

<p>RMS Resource Management System for Airport Resources</p>	<p>AODB Airport Operational Database</p>	<p>GHAMS Ground Handling Management System</p>
<p>A-CDM Broker Solution for Airport Collaborative Decision Making</p>	<p>AMB Advance Message Broker</p>	<p>CAT Check-In Allocation System</p>
<p>PPC Passenger Processing Control</p>	<p>FIDS Flight Information Display System</p>	<p>BCIS Baggage Claim Control & Information System</p>
<p>AVD Aerial View Display</p>	<p>BI Aviation Business Intelligence</p>	<p>BHS Baggage High Level Control System</p>
<p>SAMS Slot allocation and management system</p>	CORE MODULES	
		<p>ASIMSpplus Advanced IATA Messaging System</p>



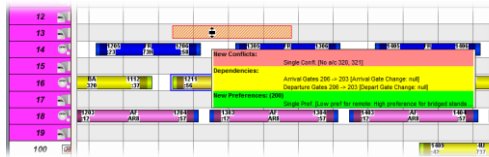
T-Systems' Resource Management System - Part of our Proven Aviation Solutions Implemented throughout the World.

T-Systems' RMS offers you:



- Real-time update processing and proven support functions enable to **respond quickly and efficiently** to unpredictable situations like flight delays or adverse weather.
- All necessary **AODB data** is at the RMS' users fingertips.
- Awareness of timestamps of the **A-CDM process** improve reliability of the resource planning.
- The resource planning is supported by **simple drag & drop** actions with real-time check of business rules in user-friendly Gantt charts.
- The **Auto Solver** offers fast and qualified decision support.
- A **flexible yet powerful set of rules** reflects business requirements and constraints accurately and are permanently checked on-the-fly.

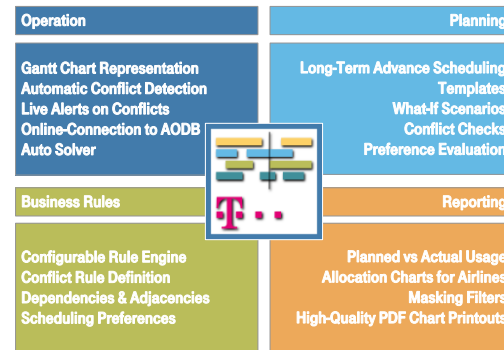
Planning **scenarios** with varying flights, limited stands, future gates, upcoming aircraft types allow for addressing tomorrow's challenges without affecting daily operations.



RMS for the Management of Non-mobile Airport Resources –Airport Operation by Drag-and-Drop

What is T-Systems' RMS?

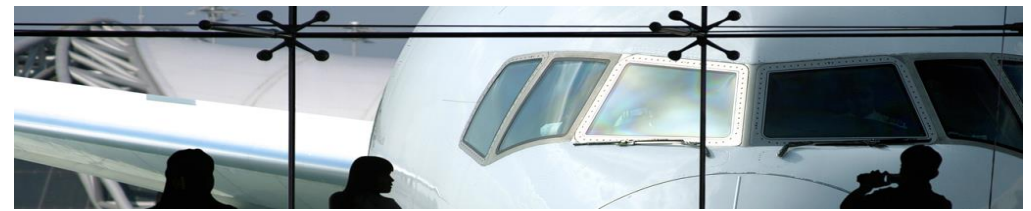
With the Resource Management System (RMS), T-Systems has designed a solution for the efficient management of flight handling resources. It supports the planning of resources such as baggage belts, all types of stands from the pier-served stands to remote stands, the organization of the gates in combination with the associated departure lounges, the departure belts required for baggage handling, and check-in counters, flight check-in, common check-in and pre-check-in.



The full business process from long-term planning based on seasonal schedules to medium-term planning to operations and billing preparation is covered by T-Systems' RMS.

The RMS provides full integration into T-Systems' airport suite and interacts closely with T-Systems' AODB, sharing reference data, flight data and business logic as well as authorization management. Integrated in T-Systems' AODB, it contributes to the reduction of administrative costs. Nevertheless it can also easily be deployed as a stand-alone system interacting with a 3rd party AODB.

The integration with the AODB includes full awareness of the CDM process. Estimates and actual times gathered during collaborative flight handling immediately update the Gantt charts and are thus made aware to the RMS user.



RMS Components

Gantt Charts – As the major workbench for the resource planner, Gantt chart views are employed. The Gantt charts depict resource needs for flight handling as well as other important resource-related information. Several filtering and colouring options enable the user to focus on the most important aspects of the resource planning.

Sophisticated Rule Editor – A convenient and powerful rule editor enables the airport staff to configure business rules for allocation conflict checks, for preferred allocations and for creating demands for allocations from flight schedule. By means of the rule editor business rules can easily be adjusted by experienced users to match changing environments and requirements in an optimal way. There is no need to consult the manufacturer to adjust the business logic.

Scenarios and Templates – Scenarios in the RMS are resource allocation plans which may be based on modified flight schedules, varying available resources and/or what-if reference data like upcoming aircraft types and intended modifications of the airport layout. The RMS allows for creating deliberate scenarios.

Auto Solver – Based on the business rules the Auto Solver applies heuristic search techniques to propose complete, conflict-free solutions to allocation problems. The Auto Solver can be applied to one or more allocations, or all allocations within a defined time frame, delivering several solutions. It can be employed for long-term planning as well as for ad-hoc re-planning, even under peak traffic.



Definite Answer to Complex Planning Tasks

The RMS supports the preparation of operations by sophisticated tools and functions. Scenarios based on factual reference data and flight schedules are used as templates for the resource allocation for operations. A sophisticated **merging function** combines the medium-term planning with short-term updates and results in a resource allocation plan that maintains as much as needed from past patterns. This results in an allocation plan that differs as little as possible from previous plans. This is an aspect, which increases convenience for the airport's users, for passengers as well as airlines and handlers.

In addition, **what-if scenarios** can easily be made up that utilize modified flight schedules, future resources, upcoming aircraft types and modified rule sets. They provide easy means for evaluating future trends and long-term analyses. For effective long-term planning, additional cost-intensive planning tools are not necessary. Scenarios allow for setting up valid planning today for your airport's future.

Most Advantageous Planning Support

T-Systems' RMS provides the planner with all the information to do her or his job efficiently. The information is provided **exactly at the time it is needed**: The allocation bars display the most relevant information; different colouring schemes can be applied to highlight important aspects like aircraft size, airline etc.. Additional information can be obtained through the mouse-over window and in detail panels by just a mouse click.

The planner is supported by many **proven functions and features** to allow for high efficiency and security. One is the immediate conflict check: When moving an allocation bar, violations of constraints or any type of conflict rule are indicated before the operator drops the allocation bar on the resource. Unwanted side effects like sending updates to connected systems are avoided.

Safeguarded investment

T-Systems' airport products employ latest technologies; long-term support and expandability allow for a long lifecycle and thus safe your invest. T-Systems' RMS gives you the know-how and security of a manufacturer with more than 30 years of experience in the airport business.